

# Online Art History Timelines

Craig Roland

**A** timeline places related events in chronological order, which can help students to visualize and understand history. The following five sites feature art history timelines that can be used to enhance your lesson presentations or to support student research projects.

## African Voices

[www.mnh.si.edu/africanvoices](http://www.mnh.si.edu/africanvoices)

Explore Africa's rich and diverse history and culture in this interactive site from the Smithsonian's National Museum of Natural History. The History section includes an interactive timeline that uses text and images to illustrate Africa's history from the first evidence of humankind, through the ancient civilizations of the Nile, to nineteenth-century colonialism, and present-day challenges. Other sections examine African cultures using the themes of family, work, community, and the natural environment; and feature the carvings of Lamidi Fakeye of Nigeria and photographs of Afro-Brazilian religion by Phyllis Galemba. A separate learning center webpage offers a bibliography of further resources, including CDs and audiocassettes, and a listing of related websites. A separate learning center page offers resources for further study.

## American Art Timeline

[stage.phillipscollection.org/research/american\\_art/timeline.htm](http://stage.phillipscollection.org/research/american_art/timeline.htm)

This interactive timeline covers 150 years of American art, from 1830 to 2000, using works from the Phillips Collection. Selected works are placed along a timeline, based on their date

of completion. To provide some context, a sampling of important events during each decade is included above and below each image. Commentary is provided for each image along with an artist biography and suggested cross-curricular learning activities. It is also possible to search the program of more than 650 works of art by artist name, museum, or date.

## China History Timeline

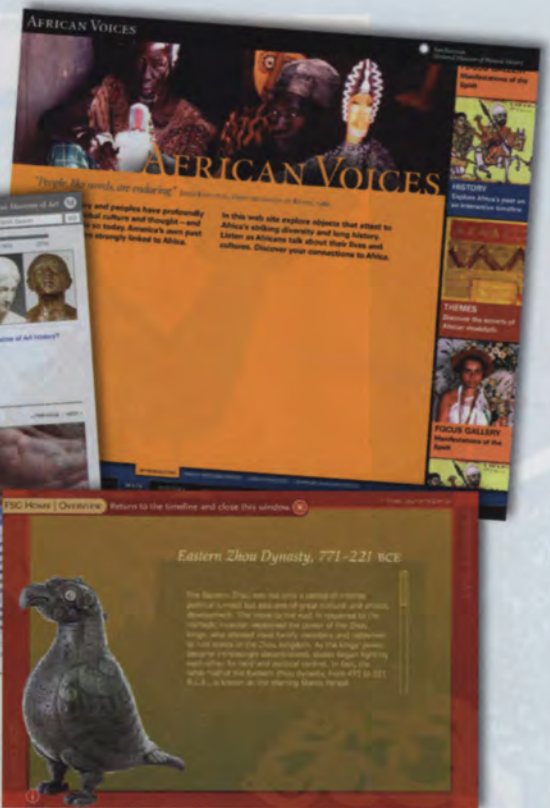
[www.asia.si.edu/exhibitions/online/chinaTimeline](http://www.asia.si.edu/exhibitions/online/chinaTimeline)

This interactive timeline, from the Freer/Sackler Galleries, introduces facts about Chinese history from the Late Neolithic period (5000–2000 BCE) to the present. Clicking on icons along the timeline produces a short text overview of each time period, along with an illustrative work of art from that period.

## Heilbrunn Timeline of Art History

[www.metmuseum.org/toah](http://www.metmuseum.org/toah)

The Metropolitan Museum of Art's curatorial, conservation, and education staff collaborated to produce this interactive timeline that covers the history of world art from prehistory to the year 2000 as illustrated and represented by works of art in the museum's collection. The timeline



can be viewed from a chronological, geographical, or thematic context. Each image featured in the timeline is accompanied by extensive supporting material and can be enlarged for closer inspection.

## Timeline of Modern & Contemporary Art

[the-artists.org/art-movements.cfm](http://the-artists.org/art-movements.cfm)  
This text-based timeline features modern and contemporary artists that are included on **the-artists.org** website. The timeline lists major art movements, schools, styles, periods, plus themes and art prizes that have occurred since the late-nineteenth century. Each of these items are linked to pages that typically include brief descriptions and lists of related artists. Artist pages include a portrait of the artist and brief biography, along with links to other resources and the artist's personal website, if available.

*Craig Roland is an associate professor of art education in the School of Art and Art History at the University of Florida in Gainesville, Florida. He is the author of The Art Teacher's Guide to the Internet (Davis Publications, 2005). rolandc@ufl.edu*